

SAVETEC

Sicherheitstechnik

- Leinensicherung
 - Vitrinensicherung

- Videoüberwachung
 - Kabelmontagen

- Brandmeldeanlagen
 - Alarmanlagen

SAVETEC Sicherheitstechnik
Ardeyer Str. 110
DE-58730 Fröndenberg / Germany

Tel. +49 (0) 2378 86 86 33
Fax. +49 (0) 2378 86 86 35

Art.nr. A-SL1080-S



Savelock 1080 battery operated (powerpack) without the front- sticker:

- 1 x internal magnetic-contact
- 1 x JK Socket to connect:
 - One external magnetic-contact
 - A line of five patchboxes (A-WD 1085S)

Dimensions : 85 x 65 x 28 mm

Art.nr. A-SL2060-S



Savelock 2060 mains operated without the front- sticker:

- 1 x JK Socket to connect the power-supply (mains adapter)
- 1 x JK Socket to connect a remote control operating device
- 1 x JK Socket to connect an external alarm device
- 1 x JK Socket to connect a line of 20 patchboxes (A-WD 2065S)
- 2 x JK Socket to connect:
 - electronic locks
 - magnetic-contacts
 - ultrasonic detection systems

Dimensions: 125 x 75 x 28 mm

Art.nr. A-SL2080-S



Savelock 2080 mains operated without the front-sticker

- 1 x Socket for connecting the power supply
- 2 x JK Socket to connect remote-control operating devices
- 1 x JK Socket to connect an external alarm device
- 1 x JK Socket to connect an extra magnetic-contact
- 12x JK Socket to connect:
 - electronic locks
 - magnetic-contacts
 - ultrasonic detection systems

Dimensions: 185 x 125 x 26 mm

Art.nr. A-SL2065S-S



Patchbox without the front-sticker:

Can be used in combination with SL- 2060 and Se-kure Controle's patchbox

Includes:

- 12 x input for sensor / magnetic contacts
- 1 x output for alarm (two flashing lights)

Art.nr. A-SL-1085S-S



Patchbox without the front-sticker:

Can be used in combination with SL- 1080 and Se-Kure controle's sensors

12 x input for sensor/ magnetic contacts

Power -Supplies:

Art.nr. A-20601A



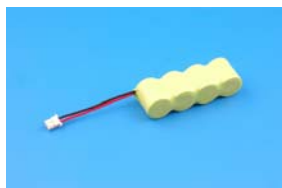
Supply for Savelock 2060
12 Vdc 1.25 A

Art.nr. A-2080 4 A



Supply for Savelock 2080,
12 Vdc 4A

Art.nr. A-NI6000



NiHM battery metal hibride 600 mAh for SL 2060

Art.nr. A-PP1080



Powerpack for the SL 1080

Art.nr. B-BA0101



Battery for the keyfob

Accessories:

Art.nr. B-RJ002



Jumper

Art.nr. B-BT001



T-connector
6 core

Art.nr. B-KO001



Line Coppler
6-core

Art.nr. A-IND001



Indicator for SL-2060:

Reads status line-security and will light up whenever there's alarm

Other accessories:

Camera-adapter:

B-SCCA001 : Security screw

B-TCA001 : Special key for camera-adapter

Tape:

A-STRAT01: Adhesive for stand-alone sensor (A-SAT)

A-STRAT02: Adhesive for stand-alone sensor (A-SAT)

A-STRAT03: Adhesive for sensor round Ø 17mm

A-STRAT04: Adhesive for the adjustable wallsocket (B-CL0001)

A-STRAT05: Adhesive for the wallsocket (B- CL0002)

A-STRAT06: Adhesive for the wallsocket with led (A-WSG001)

A-STRAT07: Adhesive for the sensor (type AL-SE-002)

Cables:

Art.nr. A-CA0000



Cable with connection
6 core
Length: 4,5 meters

Art.nr. A-CA0001



Cable for powersupply with euro-socket

Art.nr. A-CA0002



Cable between two splitterboxes
6 core
Length:4,5 meters

Art.nr. A-CA0003



Cable 2x plug for connecting the splitterbox
to the wallsocket
4-core
Length: 2,10 meters

Star-lock and pins:

Art.nr. A-GS0003



Star-lock L/R

Art.nr. A-STAR RET0001



Retainer plate

Art.nr. A-LockT-conn



T-connector for Starlock

Pins:

Art.nr. A-STAR 103T



Fixed locking pin through sliding door

Art.nr. A-STAR 105T



Flexible locking pin for sliding doors.

Art.nr. A-STAR106T



Flexible locking pin used through glass for turning door

Art.nr. A-STAR107T



Flexible pin used around glass for turning door

Art.nr. A-STAR108T



Flexible pin used around glass with lip for turning door

Art.nr. A-STAR109T



Flexible locking pin with mounting base for drawer

Magnetic-contacts

Art.nr. A-MC0001



Contact recessed, including RJ contact, magnet not included

Art.nr. MC002-O



Contact desktop including RJ contact, magnet not included

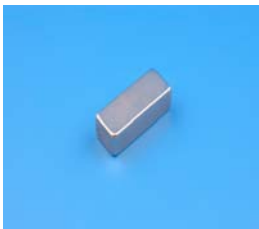
Magnets

Art.nr. A-MR0001



Magnet round 10 mm/ height 3 mm

Art.nr. A-MR0002



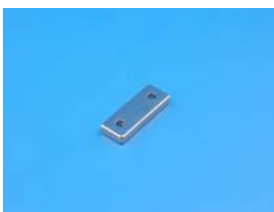
Magnet ultra strong 20 x 10 4 mm

Art.nr. A-MR0003



Magnet round 10mm/height 10 mm

Art.nr. A-MR0004



Magnet ultra-strong 28 x 10 x 3 mm

Readerheads

Art.nr. A-RHM001



Keyfob-reader, metal for SL-2060 and SL-2080

Art.nr. A-RHF001



RF-readerhead to use in combination with the keycard/keyhanger

Art.nr. A-RES001



Reset Unit RF-reader

Art.nr. A-ReadT-conn



T-connector for RF-reader (two readers to one reader-output)

Keys:

Art.nr. A-KF0101



Keyfob, battery included

Art.nr. A-KC0101



Keycard

Art.nr. A-LRC0001



Long range card

Art.nr. A-KC0102



Program card

Art.nr. A-KEC001



Keyhanger

Siren

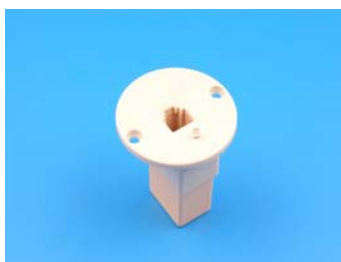
Art.nr. A-SIR001



Sirene:
Can be used in combination with SL-2060 and SL-2080

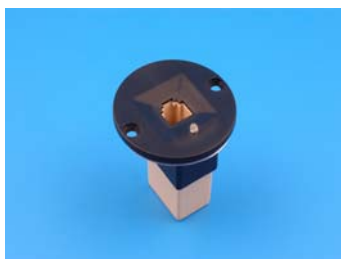
Wallsockets

Art.nr. A-WSG001



Wallsocket grey with double sided tape

Art.nr. A-WSB001



Wallsocket black with double sided tape

Sensor-programm

Art.nr. AL-SE-005-00A



Universal Sensor with one switch
Type A :
30 cm coiled cable, 180 cm. straight

Art.nr. AL-SE-005-00B



Universal Sensor with one switch
Type B:
180 cm. straight cable

Art.nr. AL-SE-002-SA



Sensor with one switch
180 cm straight cable. 30 cm coiled

Art.nr. AL-SE-002-SB



Sensor with two switches
180 cm straight cable, 30 cm coiled, 12 cm straight

Art.nr AL-SE-002-SC



Sensor with one switch and special high quality cable that
has an extremely high stretching power.
24 cm coiled, 180 cm straight

Art.nr. AL-SE002-SD



Sensor with two switches and special high quality cable that
has an extremely high stretching power
24 cm. coiled cable, 180 cm straight

Art.nr. AL-SE-002-SE



Sensor with two switches
180 cm straight, 30 cm coiled

Art.nr. AL- SE-002-SG



No switches, just for the magnetic positioning

Art.nr AL-SE-002-SF



No switches, just for positioning

Camera adapters

Art.nr. AL-SE-004-SA



Type A :
With one switch

Art.nr. AL-SE-004-SB



Type B :
With two switches, two accessories and one extra universal sensor.

Art.nr. B-CA001



Cable camera adapter

Art.nr. B-CA002



Cable camera adapter

Art.nr. A-SAT



Stand alone sensor

Art.nr. A-USB01



USB-sensor type A

Art.nr. A-USB02



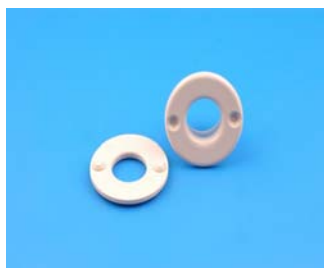
USB-sensor type B

Art-nr. B-CL0001



Cable-leading type 1: Length can be adjusted and can be assembled to wood or metal

Art.nr. B-CL0002



Cable-leading type 2: Length can not be adjusted and can be assembled to wood or metal

Art.nr. A-ST-READER



Star-prox

Stand alone access-control system

Maximum 50 user-cards

Maximum 8 supervisor-cards

Maximum 1 program- card

Service-mode and time-control are programmable